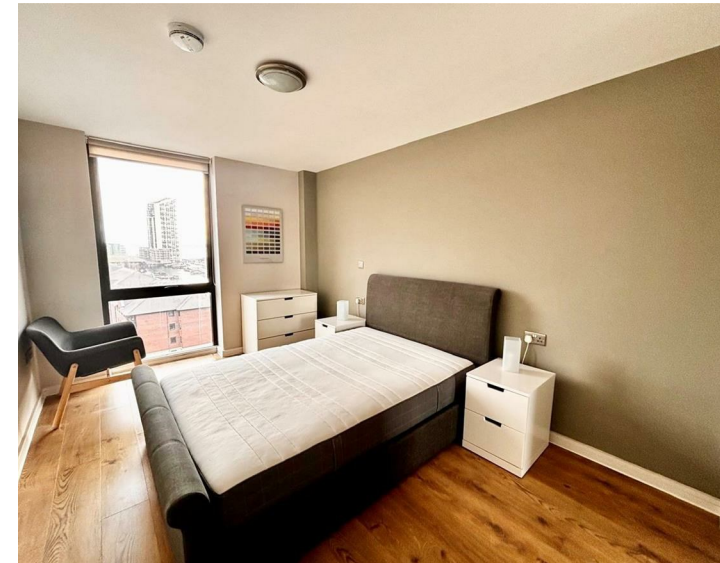
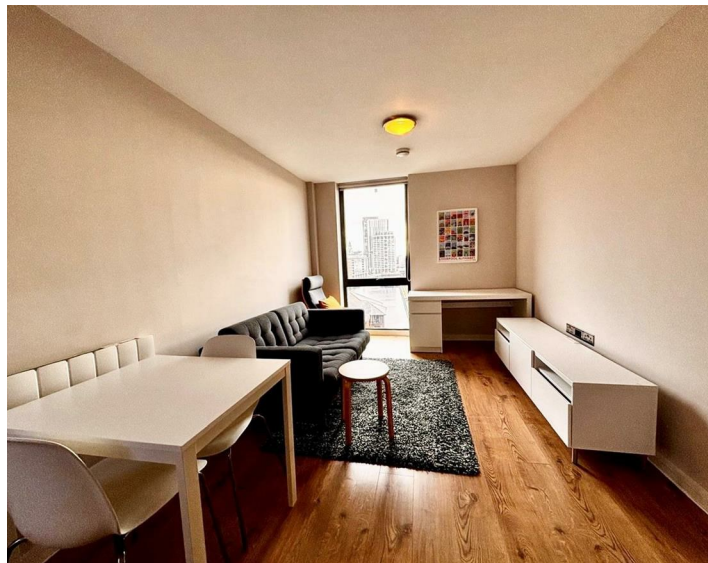




Apt 715, Quay Central 9 Jesse Hartley Way, Liverpool, L3  
£900 Per Month

www.  
cityresidential  
.co.uk





About the Property

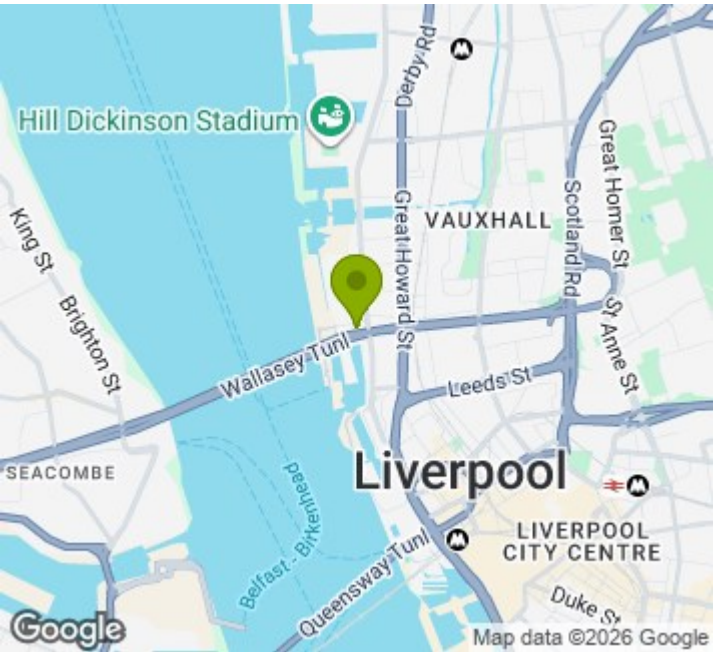
Available now is this well-presented one bedroom apartment located on the 7th floor of Quay Central, 9 Jesse Hartley Way, Liverpool.

This fully furnished apartment offers a bright open-plan living and dining area with modern kitchen, a generously sized double bedroom, and a contemporary bathroom finished to a high standard.

Situated in a popular waterfront development close to Liverpool city centre, local amenities, and excellent transport links.

There is no parking available with this apartment. Ideal for a professional individual or couple seeking stylish city living.

- EPC - C
- Council Tax Band - B
- Deposit Amount - £1038
- Immediate Move In



Energy Efficiency Rating

	Current	Potential
Very energy efficient - lower running costs		
(92 plus) <b>A</b>		
(81-91) <b>B</b>		
(69-80) <b>C</b>	<b>78</b>	<b>78</b>
(55-68) <b>D</b>		
(39-54) <b>E</b>		
(21-38) <b>F</b>		
(1-20) <b>G</b>		
Not energy efficient - higher running costs		
<b>England &amp; Wales</b>	EU Directive 2002/91/EC	



City Residential  
81/87 Victoria Street, The Old Haymarket, Liverpool L1 6DG  
T: 0151 231 6100 F: 0151 231 6105  
E: sales@cityresidential.co.uk



WWW.  
cityresidential  
.co.uk